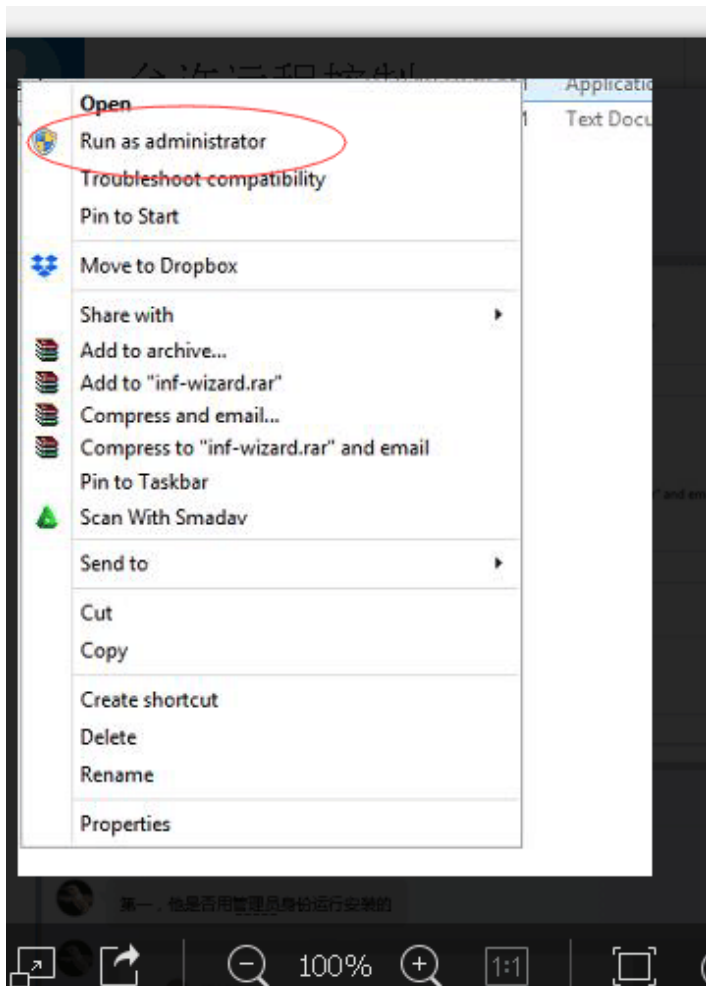


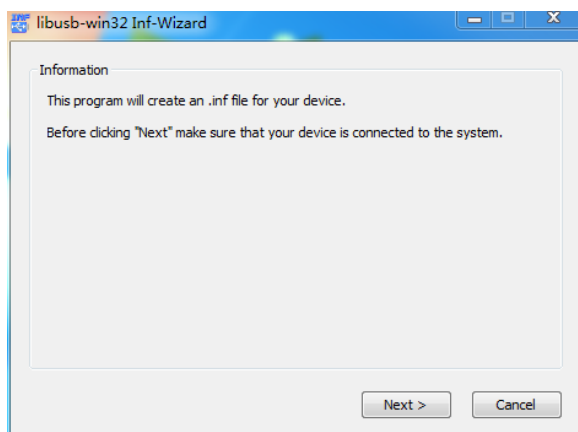
TYT MD 430 **USB driver install installation**

You MUST connect the radio to the Windows PC to correctly install the USB driver and CPS.

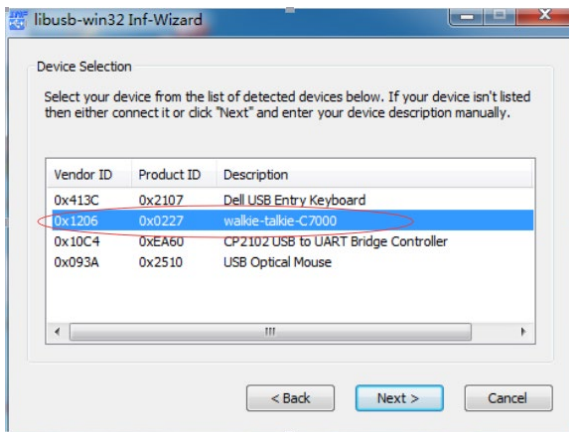
1. When you run the driver, please **run as administrator**, see the photo below



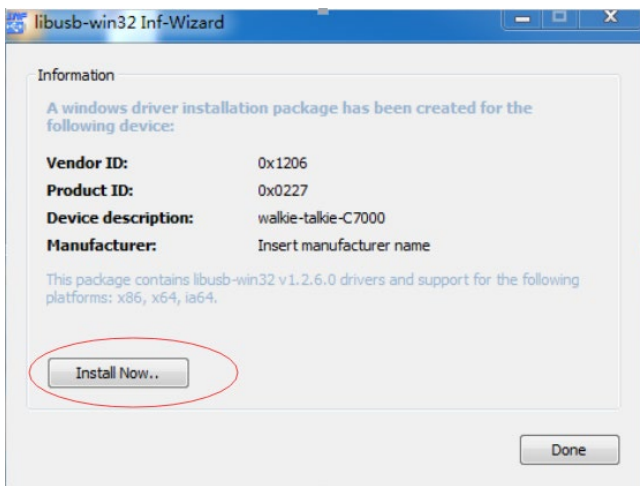
2. **Please use USB cable connect PC and MD430 USB (430 should be turned on)** , then install the USB driver, open **usblib_hrc7000.exe** file



3. Click Next, choose the USB PORT (if pc and 430 connected, radio will show walkie-talkie-C7000, if not, please check if radio is on, or USB works)



4. Click Next, and click Next again, choose the file to save USB driver (find whatever file which can save driver)
5. Then click: Install Now...



6. After install done, click done

